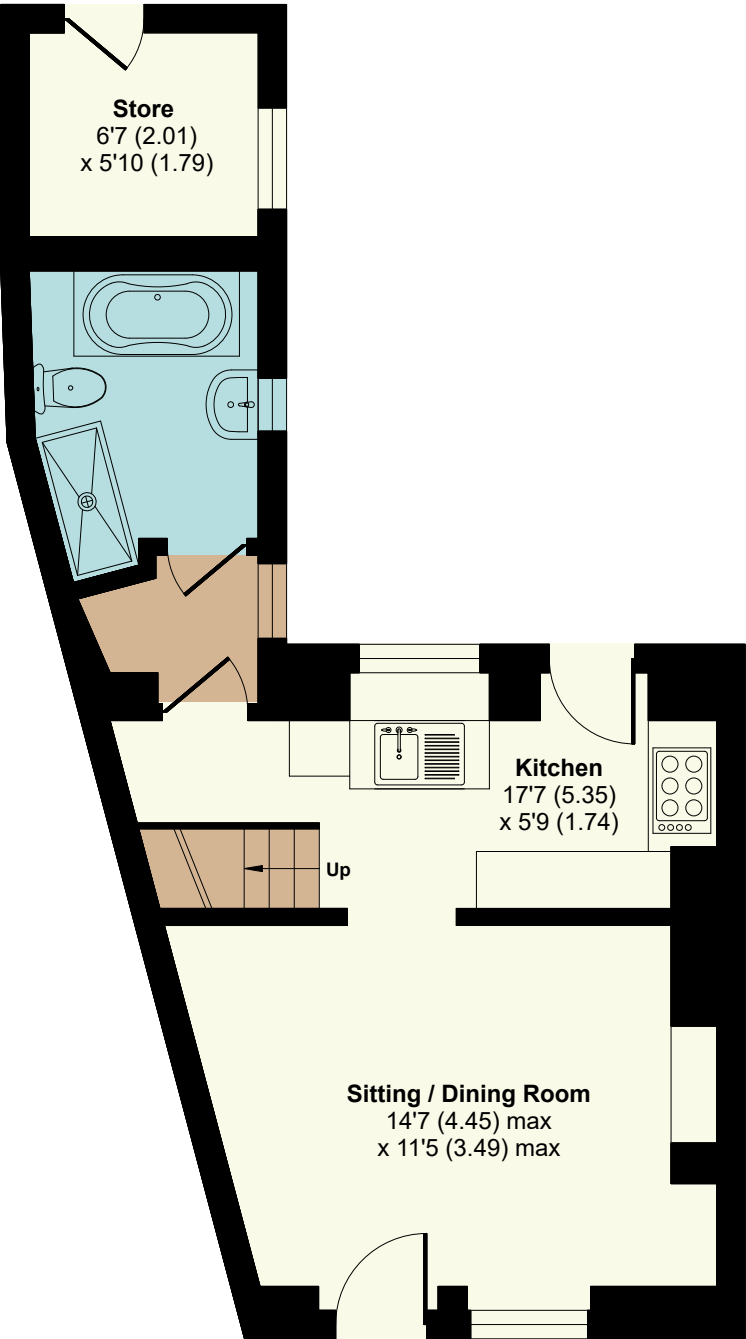
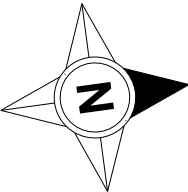
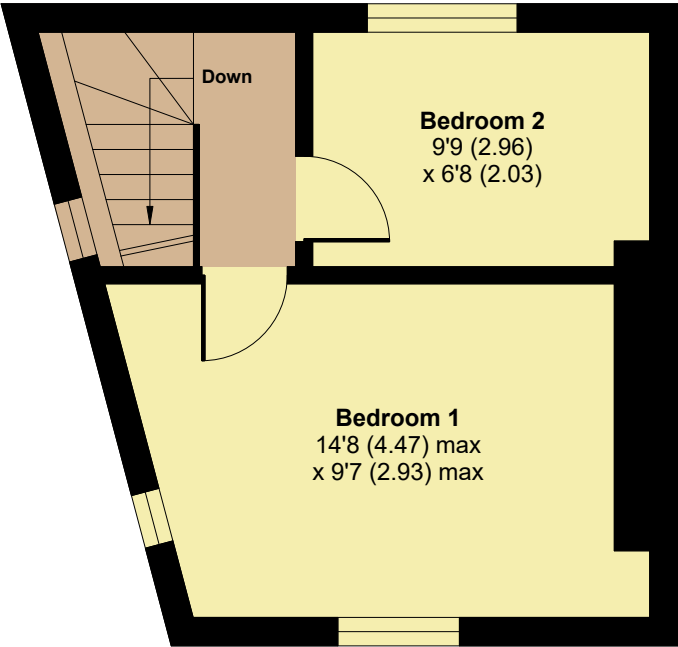


High Street, Silvertown, Exeter

Approximate Area = 600 sq ft / 55.7 sq m
Outbuilding = 39 sq ft / 3.6 sq m
Total = 639 sq ft / 59.3 sq m
For identification only - Not to scale



GROUND FLOOR



FIRST FLOOR



Floor plan produced in accordance with RICS Property Measurement Standards incorporating International Property Measurement Standards (IPMS2 Residential). © n1che.com 2024. Produced for Twenty Twenty Property (SW) Ltd.. REF: 1196184

TwentyTwentyProperty